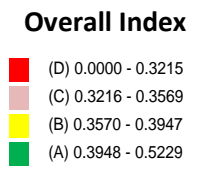
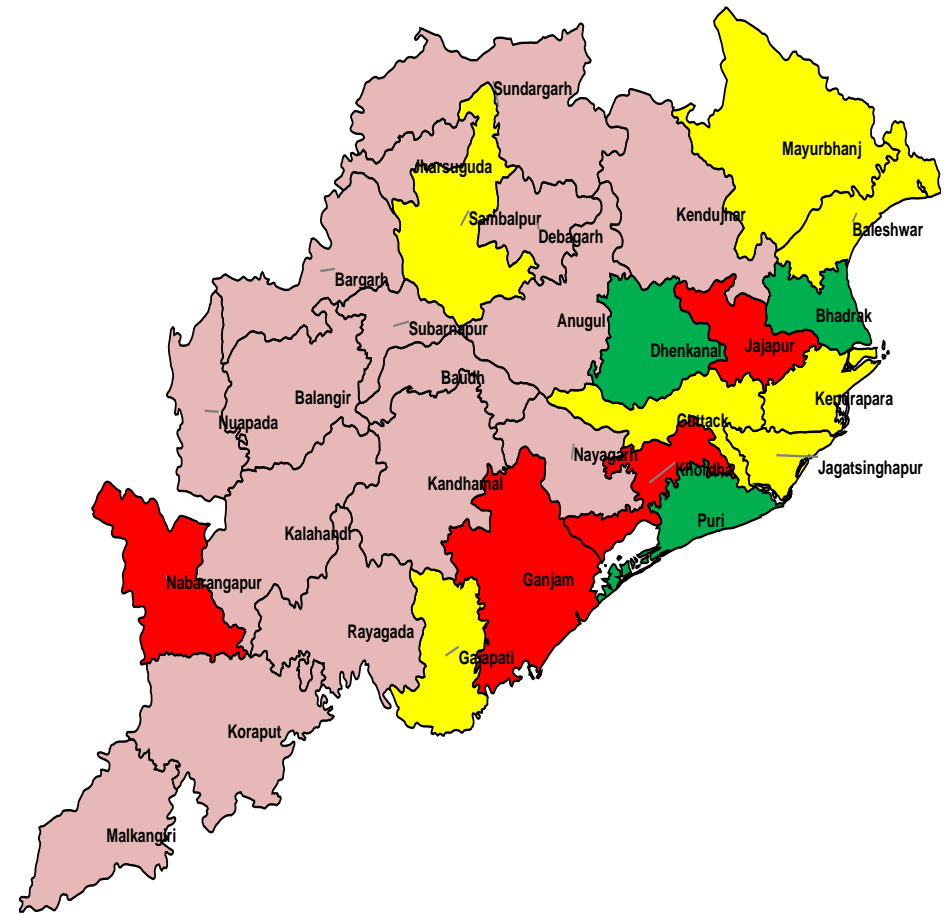


District	Overall Index	
	2014-15	2013-14
Bhadrak	0.3991	0.4193
Dhenkanal	0.3969	0.3883
Puri	0.3965	0.4218
Baleshwar	0.3771	0.3889
Jagatsinghpur	0.3762	0.3761
Gajapati [#]	0.3681	0.4005
Cuttack	0.3662	0.3884
Sambalpur	0.3655	0.4185
Kendrapara	0.3650	0.3682
Mayurbhanj	0.3582	0.374
Sonapur	0.3568	0.3527
Nayagarh	0.3542	0.3699
Deogarh	0.3541	0.3596
Jharsuguda	0.3489	0.3704
Kalahandi	0.3470	0.3531
Bargarh	0.3464	0.3568
Kandhamal [#]	0.3460	0.3627
Anugul	0.3458	0.3547
Keonjhar	0.3431	0.3595
Ba [#]	0.3410	0.3348
Rayagada [#]	0.3374	0.3532
Sundargarh	0.3346	0.3599
Balangir	0.3324	0.3354
Malkangiri [#]	0.3311	0.3479
Koraput [#]	0.3279	0.3334
Nuapada [#]	0.3243	0.3419
Ganjam	0.3210	0.3468
Jajapur	0.3188	0.3472
Khordha	0.3090	0.3619
Nabarangapur [#]	0.3000	0.3144

#: High Priority District

DISTRICT DASHBOARD – ODISHA
 (Relative to all districts in the country)
 Based on HMIS data for 2014-15
 Status as on 4th July 2015



District Rank	District	Composite Index (2014-15)				
		Overall Index	Pregnancy care	Child Birth	Postnatal maternal & new born care	Pre Pregnancy/ Reproductive age group
158	Bhadrak	0.3991	0.5154	0.3617	0.4281	0.1941
166	Dhenkanal	0.3969	0.4659	0.3733	0.4097	0.2843
167	Puri	0.3965	0.4697	0.2691	0.4628	0.2917
236	Baleshwar	0.3771	0.4553	0.2095	0.4524	0.2887
244	Jagatsinghpur	0.3762	0.428	0.278	0.4479	0.2684
283	Gajapati [#]	0.3681	0.4872	0.1805	0.438	0.2407
287	Cuttack	0.3662	0.3982	0.347	0.4388	0.2112
290	Sambalpur	0.3655	0.4184	0.2613	0.4387	0.2596
294	Kendrapara	0.3650	0.4447	0.204	0.414	0.3114
328	Mayurbhanj	0.3582	0.4272	0.1969	0.4566	0.2406
338	Sonapur	0.3568	0.4074	0.3217	0.4029	0.2308
349	Nayagarh	0.3542	0.452	0.1638	0.4343	0.2481
351	Deogarh	0.3541	0.433	0.1815	0.4479	0.2389
376	Jharsuguda	0.3489	0.3813	0.2242	0.4418	0.2648
388	Kalahandi	0.3470	0.4295	0.1803	0.4335	0.232
393	Bargarh	0.3464	0.4287	0.248	0.3497	0.302
395	Kandhamal [#]	0.3460	0.4442	0.1786	0.3876	0.2804
397	Anugul	0.3458	0.4245	0.1892	0.3873	0.3019
410	Keonjhar	0.3431	0.4072	0.1615	0.4253	0.2808
421	Baudh [#]	0.3410	0.4115	0.2057	0.4018	0.2576
441	Rayagada [#]	0.3374	0.4197	0.1871	0.4264	0.2023
453	Sundargarh	0.3346	0.3865	0.2025	0.417	0.243
458	Balangir	0.3324	0.4062	0.2775	0.3749	0.1934
463	Malkangiri [#]	0.3311	0.3895	0.1363	0.4633	0.2082
477	Koraput [#]	0.3279	0.391	0.1594	0.4321	0.2174
497	Nuapada [#]	0.3243	0.4103	0.2148	0.3793	0.1991
510	Ganjam	0.3210	0.3546	0.2587	0.4227	0.1581
521	Jajapur	0.3188	0.4045	0.1481	0.3988	0.2133
558	Khordha	0.3090	0.3071	0.2135	0.3801	0.289
583	Nabarangapur [#]	0.3000	0.3879	0.1431	0.3569	0.2157

#: High Priority District